



Middle Lane, Crouch End, N8

Weekly Rental Of £395



800 finchley road, hampstead garden suburb, london, nw11 7tj

telephone 020 8458 5000 facsimile 020 8209 2068

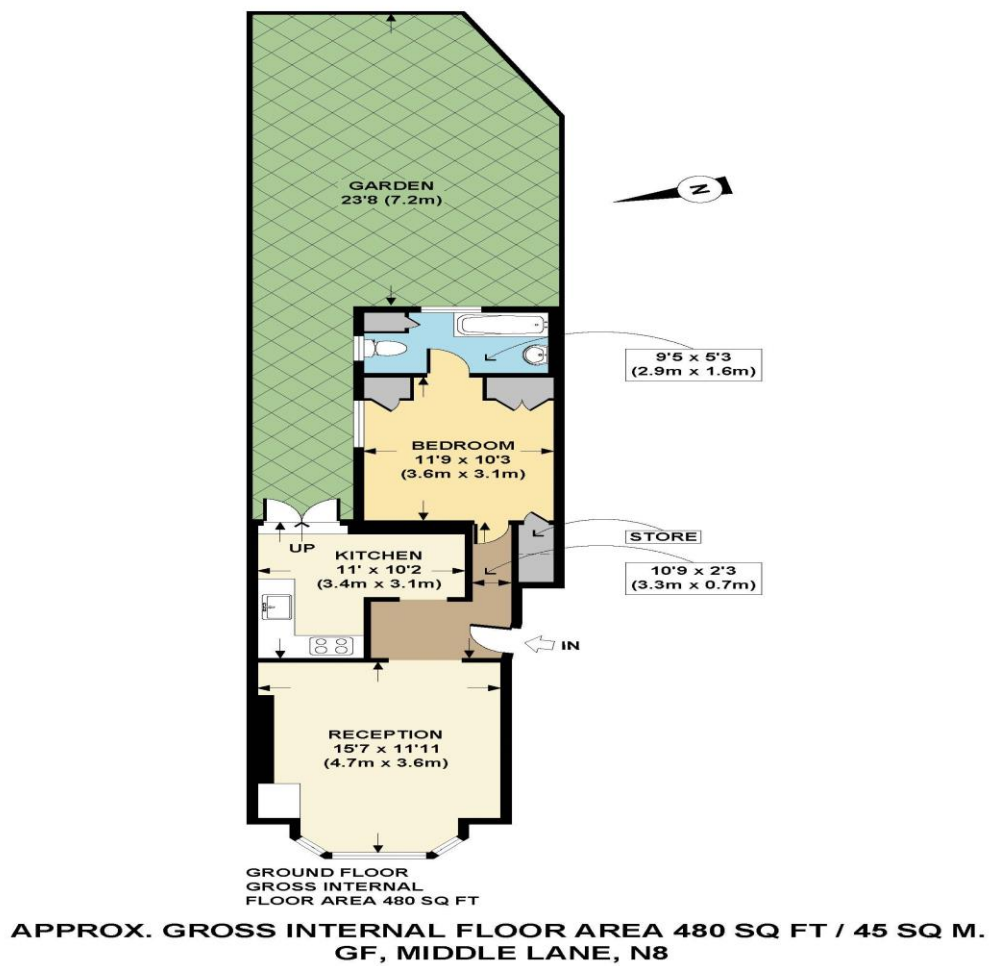
email sales@litchfields.com web litchfields.com

offices also in crouch end & highgate

Wonderful raised ground floor 1 Bed garden flat in this Victorian conversion within a short walk to Crouch End Broadway. Presented in excellent condition with separate bay fronted reception overlooking Priory Park. Boasting a well equipped kitchen/breakfast room, fitted double bedroom, contemporary bathroom and lovely private rear garden, excellent transport facilities. Available now! Unfurnished.

Lovely Victorian Period conversion | Newly decorated throughout | Double bedroom with fitted wardrobes | Private Rear garden | Separate bay windowed reception | Crouch End Broadway with its multiple cafes, boutiques and bus routes very close proximity | Eat-in Kitchen | Bathroom | Available now | Unfurnished





LTHCE4282
FOR ILLUSTRATIVE PURPOSES ONLY - NOT TO SCALE
Whilst every attempt has been made to ensure the accuracy of the floor plans contained here, measurements of doors, windows and rooms are approximate and no responsibility is taken for any error, omission or mis-statement. These plans are for representation only as defined by RICS Code of Measuring practice and should be used as such by any prospective purchaser.
Copyright : The Image Tailor 2007. Unauthorised reproduction prohibited.

